

POWER SHAPE 2™

PowerShape II is an integrated system for body contouring and face lifting combined with Multi & Bi-polar RF, Thermal monopolar RF, Vacuum and low level laser



Optimum Body Manager Four functions in one system

> Radio Frequency

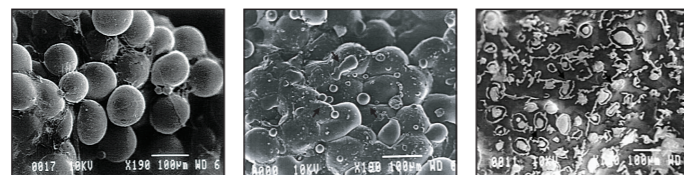
Radio Frequency delivers thermal energy deep into dermal layer, and involves applying electromagnetic waves to return physiological processes. It offers effective treatment results in cellulite, body sculpting and collagen regeneration by various RF technologies of bipolar and multipolar RF

> Vacuum

Increases blood circulation and evens out the skin to optimize efficient energy delivery. Massaging effect facilitates lymphatic drainage and reshapes the body smoother.

> Low Level Laser

Delivers specific Wavelength of light(660nm) which liquefies the fat for easier fat removal and significantly reduces the size of fat cells.



*Reference : Plastic And reconstructive Surgery, September 1, 2002.
Fat Liquefaction : Effect of low level laser energy on Adipose Tissue by Neira et al.

| Non-Surgical | No Pain | No Side Effect | No-Discomfort |

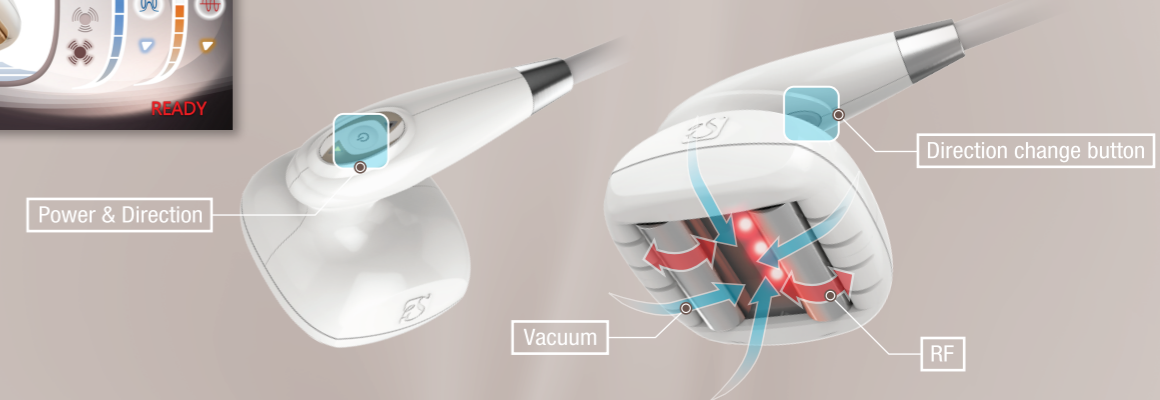
> Applications

1

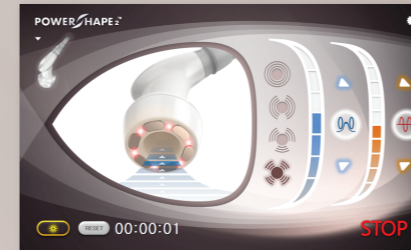


Auto-Roll Applicator

Large size auto-roll applicator pulls the target area skin to enhance vacuum suction effect

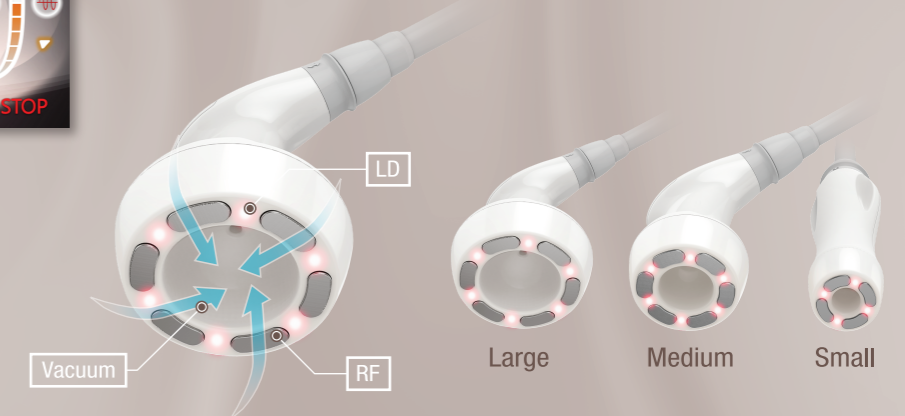


2

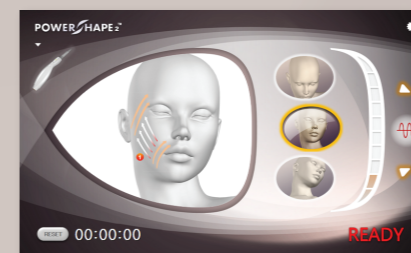


Multi-Polar RF Applicator

Multi-Polar RF technology painlessly delivers focused and optimal RF energy to the skin surface and to subcutaneous fat layers.

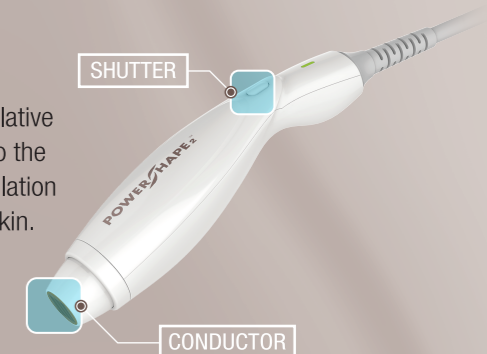


3



Facial Applicator

By delivering Thermal energy in Non-ablative method, RF energy penetrates deep into the dermis layer, resulting in collagen stimulation without any damage to the superficial skin.



> Strengths

- ✔ Absolute treatment result
- ✔ Powerful movement by Dual Motorized Rollers
- ✔ Various applicators
- ✔ 4 types of vibration pulse
- ✔ 10.2 inch wide screen